

Water Resources Themes and Critical Regional Needs in the Central U.S.

Michael D. Wells
Deputy Department Director & Chief of Water Resources
Missouri Department of Natural Resources

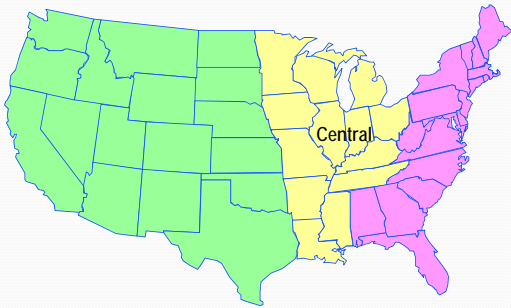
National Collaborative Water Resources Conference
August 26-27, 2009
Washington, D.C.

Presentation Overview

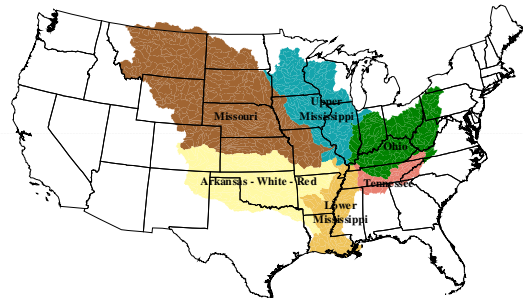
- Central Region Characteristics
- Planning Overview
- Common themes
- Implementation and outcomes
- Partnerships and stakeholder involvement
- Challenges/needs
- Emerging issues
- Missouri perspectives

2

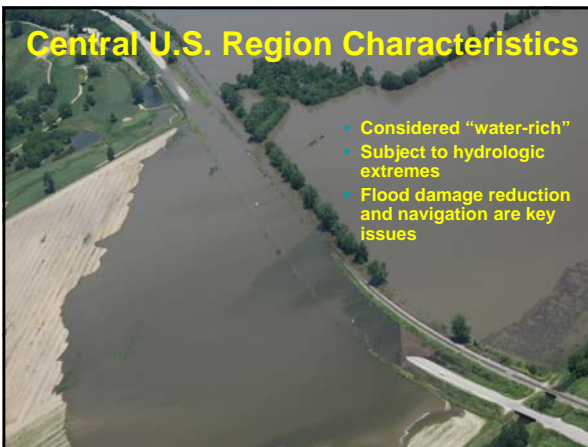
Central U.S. Region Study Area 13 States, Multiple Commissions and Basin Associations



The Mississippi River Basin



Central U.S. Region Characteristics



Central U.S. Region – Planning Overview



Central U.S. Region - Additional Planning Initiatives

- Drought
- Hazard mitigation
- Coastal zone management



Common Themes in the Central U.S. Region

- Federal funding is becoming more important in plan implementation
- Planning needs driven by:
 - Water quality / ecosystem needs
 - Extreme droughts and floods
 - Competing uses: navigation, irrigation, water supply needs, ecosystem
- Climate change is primarily viewed as a threat to navigable waterways

Implementation and Outcomes

Methods for implementing plans vary:

- Most states specify strategies or action plans for goals
- Some states add implementation planning to the planning process
- Implementation is typically at the local or regional level
- Many states provide grants or loans from revolving funds
- Economic conditions are limiting implementation from state funds
- Need consistent federal and state leadership and funding to support policies, regulations, and implementation initiatives

Partnerships and Stakeholder Involvement

- Federal partnerships: USGS, USEPA, USACE, USDA, FEMA, NOAA, Park Service
- Interstate Cooperation:
 - Great Lakes Commission
 - Upper Mississippi River Basin Association
 - Red River Basin Commission
 - Others (Missouri – Arkansas bi-state agreement)
- States provide technical and financial support
- Public participation: Regional/locally-led planning

Central U.S. Region - River Basin Commissions

- Key Roles and Functions
 - Provide planning framework
 - Facilitate consensus building
 - Advocate for policy
 - Prioritize interstate/international issues
 - Coordinate with Federal agencies
 - Take “system” approach to water resources management



Central U.S. Region

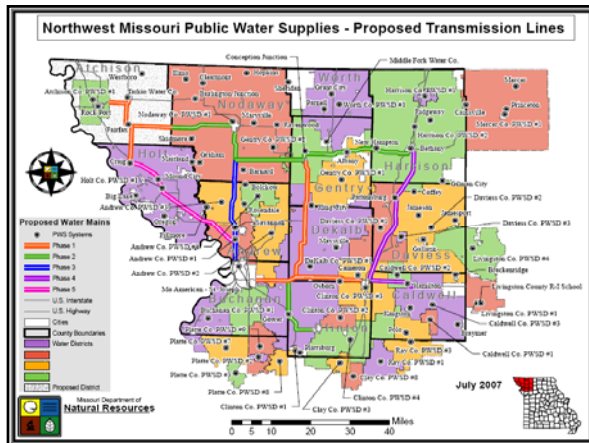
Challenges	Needs
Water Supply (surface water, groundwater, interstate)	Funding/Need for resources
Water Quality	Comprehensive and integrated water resources planning
Ecosystem Needs	Water management for competing uses
Competing Uses	Infrastructure
Aging Infrastructure	Water Quality
Funding	Climate Change
Climate Change	Data and information/Tools
Growth/Development	Regulatory Authorities
Energy Development	Water Quantity Supply

Emerging Regional Issues

- Water for energy development (visa versa)
- Emerging contaminants - Pharmaceuticals
- Resiliency of existing and planned infrastructure
- Manufacturing slowdown
 - Decreased tax revenues
 - Changes in water demands (uses?)
 - Influx of federal dollars
- Need to plan for newly available federal funding

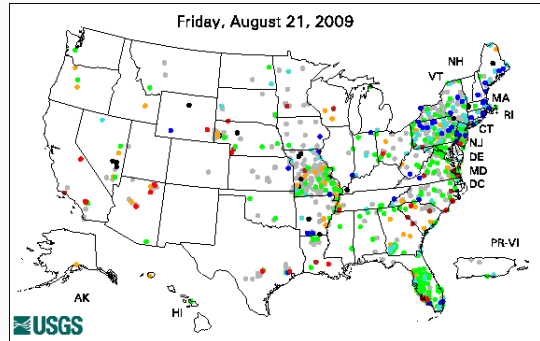
Water Resources Planning in Missouri

- Recent focus on water supply planning and enhanced data collection
 - Provide technical expertise and funding to support locally-lead, sustainable projects
 - Increased surface and groundwater monitoring
 - Sought to maximize state funding by leveraging federal resources



Real Time Groundwater Monitoring

Friday, August 21, 2009



Missouri's Challenges

- Fostering public participation and buy-in
- Planning to balance all beneficial uses
- Documenting water use
- Determining in-stream flow needs
- Determining aquifer safe yield
- Promoting and marketing water use efficiency
- Planning for future climate change impacts
- Securing sustainable funding

Thank you for listening.
Questions?

